

Men's dorm

Dormy Fukiage Park

Common facilities

Dining Room

Laundry

Kitchen

Public Bus

Private shower

Common equipments

TV

Vacuum

Iron

Refrigerator



[Location] 2-16-1 Fukiagechō Showa-ku, Nagoya, Japan

room I 7.29 m²

Transportation - Subway Line sakuradori Line [Fukiage] Station

room II 12.15 m²

8 minutes walk from Exit ④

[4 story reinforced concrete building;

Opening April 1, 1998 (Renewal)

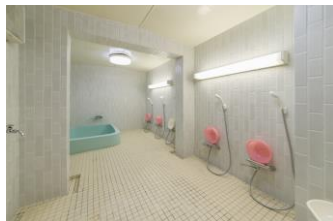
Capacity [57] (full private)

■ Furnishings bed, desk, bookshelf, closet, curtain,

desk lamp, air conditioning, TV input/output terminals, optical Internet connection



■ Dormitory facilities



■ mealtime

Breakfast / 6:30 AM ~ 8:30 AM (Saturday only 6:30 AM 10:30 AM)

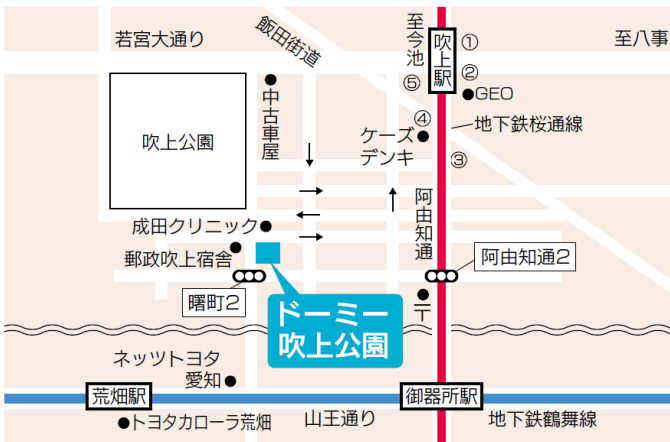
Supper / 6:30 PM ~ 10:30 PM (Saturday only 6:30 PM 9 :00)

● Public Bus Time

6:30 PM ~ 12:00 PM (Monday to Saturday)

※ No meal service on Sundays, holidays and the 5th Saturdays of a month.

※ Private shower room is open 24 hours a day..



8 minutes walk to
convenience stores



8 minutes walk to
the hospital roof tile



8 minutes walk to
Rehabilitation Medicine



8 minutes walk to
Home appliance shop